



Provider Scoring

**The analytics and insights you need in a workflow
built for speed!**



AMD data

500k+

providers

6M+

patients

\$50B

medical bills

50+ years

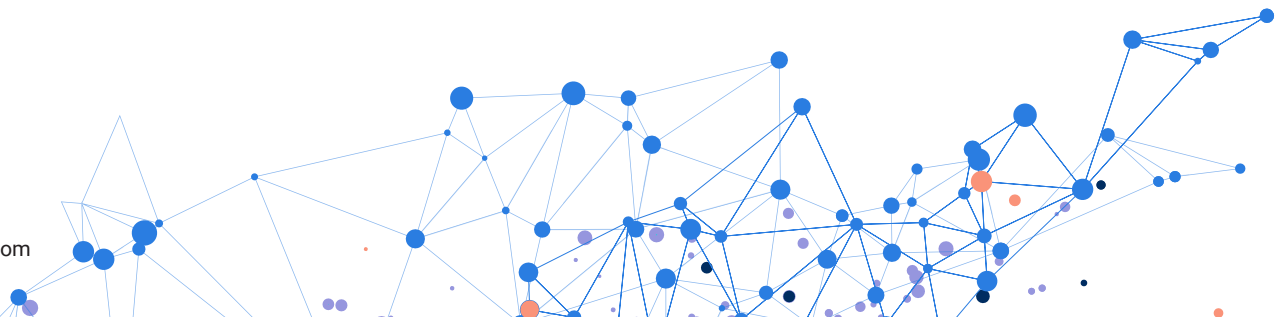
of safeguarding insurers' data means
security and confidence

The Problem: Inflated Treatment Costs, Higher Reserves, and Bloated Settlements Due to Bad Medicine

It's no secret that within alleged injury claims hide outrageous acts of fraud, waste, and abuse (FWA). Your Special Investigation Unit (SIU) and Casualty teams are tasked with identifying, assessing, investigating, mitigating, and preventing these costly risks. To achieve meaningful impact your investigations must determine which of the thousands of medical providers in your data to focus on and why. Having competent investigative lead detection and generation practices are crucial to your anti-fraud success.

The Solution: Powerful Analytic Tools Proven to Deliver Rapid Results

Our solution offers unique access to the essential detection technologies and evaluative processes required to rapidly query, surface, and scrutinize questionable provider billing behaviors. Instigate qualitative data probes to determine whether or not you risk exposure to certain types of provider behavioral threats. If so, perform quantitative data examinations to determine the degree of financial exposures you may actually have. In either instance, like the navigation system in your car guiding your way to a desired destination, Medical Provider Scoring and analytics guides you to the key data waypoints to generate provider fraud, waste, and abuse leads. And... we do all this via our user-friendly tools designed to deliver you actionable results regardless of an employee's past data mining experience.



Provider Triage

Every journey begins with that first step. Provider triage offers a starting point from which to initiate your FWA lead generation. Apply filters to customize the type of provider data to surface for further scrutiny. Choose from elements such as entity type, jurisdiction, scheme types, exposed dollars, date of service ranges, claim counts, and more! Easily bookmark your custom filter choices for future use. In seconds your search results seamlessly pivot you to our Provider Scorecard.

Provider Scorecard

Click on the Taxpayer Identification Number (TIN) or the National Provider Identification (NPI) hyperlink of an individual or organization returned based on your search criteria. You will immediately be brought into our Provider scorecard. Here you will discover critical insights into your subject provider such as their FWA Risk Indicators, details needed to understand those risks, plus financial exposure levels broken down by TINs, NPIs, Claims, Treatment Codes, and Locations.

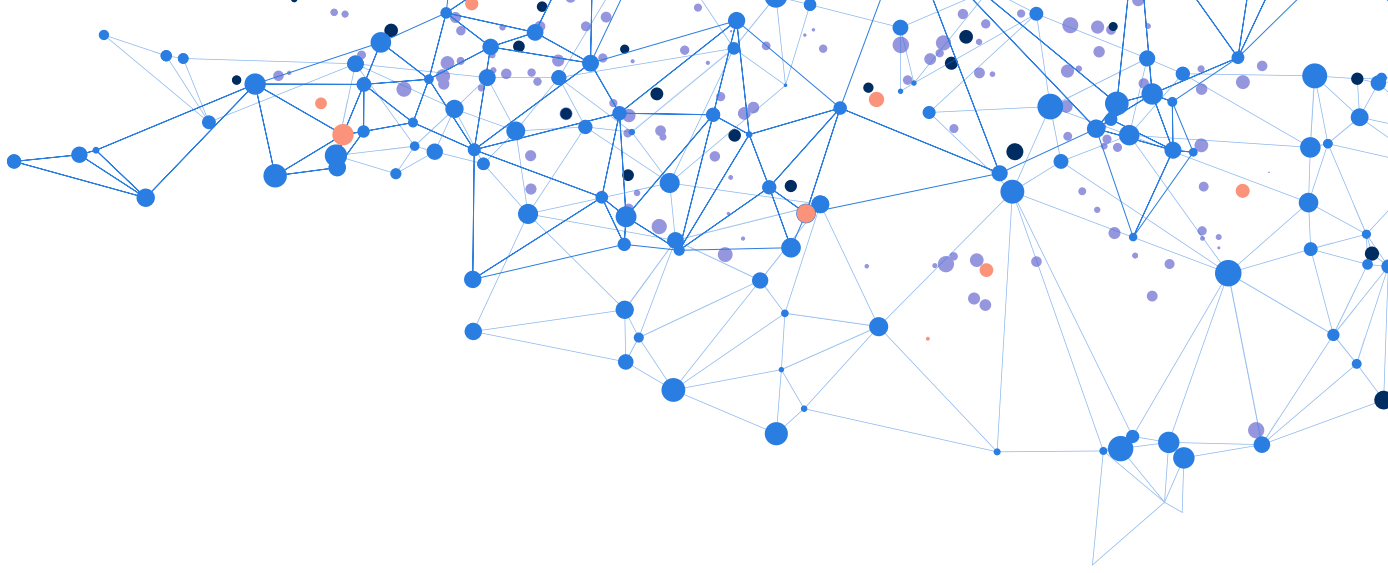
Intel Options

Intel options is a next step for those seeking deeper analytical dives. It focuses on issue-specific behavioral intelligence that exposes problem provider actions and exposures. Take advantage of these pre-built, expert designed, threat queries to initiate your investigative pursuit of outlier, trend, pattern, or multi-provider-level analyses with just a few simple keystrokes. Each query incorporates contextual guidance: the empirical evidence upon which the query was based, what information will be identified and delivered back to the user, and what easily available input information is needed from the user to launch the chosen query.

Exploratory Browsing

As your familiarity with our tools grows you may want to start building your own analytical queries. If so, our Exploratory Browsing tool will be just what you're looking for. With it you can search, find, slice, and dice FWA exposures for your very own, customized, investigative lead detection/generation. To support your progress, learn how to build queries by taking advantage of our pre-built choices offered with Intel Options. Use Exploratory Browsing to practice replicating, editing, modifying, and/or building queries based on those already built by our anti-fraud industry experts.





FAQs

What is the Difference Between Provider Fraud, Waste, & Abuse (FWA)?

Fraud is an intentional act defined by a medical provider knowingly & willfully executing, or attempting to execute, a scheme to defraud (such as billing for services not rendered or any similar intentional material misrepresentations).

Waste is overutilization of resources, services, or other practices that, directly or indirectly, result in unnecessary medical costs (such as billing for excessive and/or unnecessary treatments).

Abuse is improper use of resources or services that are inconsistent with acceptable business and/or medical practices (such as billing for mutually exclusive codes, e.g., massage therapy and manual therapy, on the same patient, on the same date of service).

What are Provider Analytics?

Provider analytics protect insurers, policyholders, and legitimately injured claimants from exploitations by medical providers who prey on the tragedies of others for their own financial gains by monitoring, assessing, and triggering on identified questionable or suspicious billings and/or treatment behaviors.

What is the Purpose of Provider Analytics?

To generate investigative leads and clues based on our proprietary detectors designed to tactically focus users to where billing threat schemes and issue-specific behavioral pattern-risks may exist within their provider population.

What is the Goal of Provider Analytics?

That detected provider risk potentials provoke our users to launch deeper factual examinations/investigations which may allow them to successfully challenge, mitigate, abate, and safeguard against those FWA risks.

Are Analytical Leads Based on Factual Investigative Outcomes?

No. They are the result of analytical intelligence gathering only. Intelligence findings do not establish certainty. They premise probabilities based on the type and volume of data available and assessed at the time of detection.

How Should Intelligence Findings be Handled?

All intelligence, whether analytic-based or otherwise, must be viewed as theory unless and until factual evidence in support of premised findings (including actual exposure levels) have been validated through direct examination and/or through direct investigation by the consumer(s) of said intelligence.



For more information contact us today by calling:

Bo Barber | Director, Investigative Analytics Unit

bo.barber@verisk.com | +1.800.888.4476 | www.verisk.com